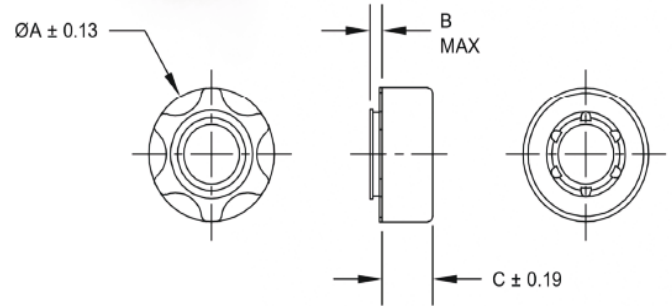


# CONTINENTAL AERO™

A Division of TRAMEC, LLC



## Clinch Nut

Clinch Nuts are permanently self-retained, self-locking fasteners that are superior to tapping a thread in an extruded hole in thin sheet metal; providing strength and durability for installation.

| Thread     | A     | B   | C    | Sheet Thickness (minimum) | Hole Size in Sheet (recommended) |
|------------|-------|-----|------|---------------------------|----------------------------------|
| M5 X 0.8   | 11.30 | 1.9 | 4.19 | 1.9                       | 7.73                             |
| M6 X 1.0   | 14.10 | 2.3 | 4.71 | 2.3                       | 8.73                             |
|            |       | 1.5 |      | 1.5                       |                                  |
| M8 X 1.25  | 16.64 | 2.3 | 5.93 | 2.3                       | 10.73                            |
| M10 X 1.5  | 18.42 | 3.4 | 7.20 | 3.4                       | 13.21                            |
|            |       | 2.5 |      |                           |                                  |
|            |       | 3.4 |      |                           |                                  |
| M12 X 1.5  | 23.88 | 2.3 | 9.61 | 2.3                       | 15.73                            |
| M12 X 1.75 | 23.88 | 2.3 | 9.61 | 2.3                       | 15.73                            |

**Material:** Property Class 10 Steel Per ASTM A563M

**Locking:** Prevailing Torque and Free-spinning options

**Other sizes available on request**

**Application:** Clinch Nuts are permanently self-retained, self-locking fasteners for installation in aluminum or soft steel assemblies. They provide load-bearing threads in thin sheet metal and offer a highly reliable method of blind fastening.



Get quote »

CONTINENTAL  
ARLINGTON, TX

Angic Global Solutions

1-888-872-0690

<https://www.AngicGlobal.com> [Sales@AngicGlobal.com](mailto:Sales@AngicGlobal.com)

# CONTINENTAL-AERO.COM

The Standard of Excellence since 1948

| Application Chart                             | Torq Lok Nuts® |         |    |     |             |                |                |       |              |    | Metric |       |       |                     |    |      |     |             |             |
|---|----------------|---------|----|-----|-------------|----------------|----------------|-------|--------------|----|--------|-------|-------|---------------------|----|------|-----|-------------|-------------|
|   | NM/NE          | NTM/NTE | NU | NTU | NE8 (N1610) | NTE8 (NTE1610) | NTU8 (NTU1610) | N1268 | 1660 LHT1660 | NC | NCFMA  | NKCFM | LHCFM | NKM NKT M NKE NKT M | WC | NFLG | BRN | DIN985 M5DN | DIN982 M2DN |
| AEROSPACE                                     |                |         |    |     |             |                |                |       |              |    |        |       |       |                     |    |      |     |             |             |
| APPLIANCE                                     |                |         |    |     |             |                |                |       |              |    |        |       |       |                     |    |      |     |             |             |
| AVIONICS                                      |                |         |    |     |             |                |                |       |              |    |        |       |       |                     |    |      |     |             |             |
| BEARING RETAINERS/PINION SHAFTS               |                |         |    |     |             |                |                |       |              |    |        |       |       |                     |    |      |     |             |             |
| BOATS   |                |         |    |     |             |                |                |       |              |    |        |       |       |                     |    |      |     |             |             |
| BRIDGES & BUILDINGS                           |                |         |    |     |             |                |                |       |              |    |        |       |       |                     |    |      |     |             |             |
| CALCULATORS                                   |                |         |    |     |             |                |                |       |              |    |        |       |       |                     |    |      |     |             |             |
| COMPUTERS                                     |                |         |    |     |             |                |                |       |              |    |        |       |       |                     |    |      |     |             |             |
| ELECTRONICS                                   |                |         |    |     |             |                |                |       |              |    |        |       |       |                     |    |      |     |             |             |
| ENGINES & TURBINES                            |                |         |    |     |             |                |                |       |              |    |        |       |       |                     |    |      |     |             |             |
| FARM EQUIPMENT                                |                |         |    |     |             |                |                |       |              |    |        |       |       |                     |    |      |     |             |             |
| FOOD PROCESSING EQUIPMENT                     |                |         |    |     |             |                |                |       |              |    |        |       |       |                     |    |      |     |             |             |
| FURNITURE                                     |                |         |    |     |             |                |                |       |              |    |        |       |       |                     |    |      |     |             |             |
| HEATING & AIR CONDITIONING                    |                |         |    |     |             |                |                |       |              |    |        |       |       |                     |    |      |     |             |             |
| HEAVY EQUIPMENT (CONSTRUCTION, MINING, ETC.)  |                |         |    |     |             |                |                |       |              |    |        |       |       |                     |    |      |     |             |             |
| HOUSE & GARDEN EQUIPMENT                      |                |         |    |     |             |                |                |       |              |    |        |       |       |                     |    |      |     |             |             |
| HYDRAULIC CYLINDERS, FLUID POWER              |                |         |    |     |             |                |                |       |              |    |        |       |       |                     |    |      |     |             |             |
| INSTRUMENT PANELS & CHASSIS                   |                |         |    |     |             |                |                |       |              |    |        |       |       |                     |    |      |     |             |             |
| MATERIAL HANDLING (CONVEYORS, STACKERS, ETC.) |                |         |    |     |             |                |                |       |              |    |        |       |       |                     |    |      |     |             |             |
| MEDICAL EQUIPMENT                             |                |         |    |     |             |                |                |       |              |    |        |       |       |                     |    |      |     |             |             |
| OIL FIELD MACHINERY                           |                |         |    |     |             |                |                |       |              |    |        |       |       |                     |    |      |     |             |             |
| RAILROADS                                     |                |         |    |     |             |                |                |       |              |    |        |       |       |                     |    |      |     |             |             |
| TELECOMMUNICATIONS                            |                |         |    |     |             |                |                |       |              |    |        |       |       |                     |    |      |     |             |             |
| TRAILER                                       |                |         |    |     |             |                |                |       |              |    |        |       |       |                     |    |      |     |             |             |
| TRUCKS & AUTOS                                |                |         |    |     |             |                |                |       |              |    |        |       |       |                     |    |      |     |             |             |

**SPECIALS: CONTINENTAL-AERO HAS HUNDREDS OF "SPECIAL" CONFIGURATIONS AVAILABLE TO CUSTOMER SPECIFICATIONS. CALL CONTINENTAL-AERO FOR FULL PRODUCT INFORMATION, SALES OR FREE SAMPLES.**



Get quote

Angic Global Solutions

1-888-872-0690

<https://www.AngicGlobal.com> [Sales@AngicGlobal.com](mailto:Sales@AngicGlobal.com)