



# Floating Locking Clinch Nuts

## Series CFFS & CFFC



Continued from previous page.

### Installation & Performance Data

Thread Size	Shank	Cold-rolled Steel			2024-T3 Aluminum			5052-H34 Aluminum			
		Installation Force (lbs.)	Pushout (lbs.)	Torque-out (in.-lbs.)	Installation Force (lbs.)	Pushout (lbs.)	Torque-out (in.-lbs.)	Installation Force (lbs.)	Pushout (lbs.)	Torque-out (in.-lbs.)	
INCH (in.)	#4-40	-1	3000	300	85	3000	220	65	1500	215	65
		-2	3000	300	150	3000	225	150	2000	225	80
	#6-32	-1	3000	300	150	3000	235	110	2000	240	140
		-2	3000	300	175	3000	275	150	2000	250	150
	#8-32	-1	3000	300	150	3000	240	110	2000	250	140
		-2	3000	400	200	3000	300	150	2000	265	150
	#10-24	-1	3500	400	150	3500	300	150	2000	300	150
		-2	3500	450	200	3500	300	200	2000	350	175
	#10-32	-1	3500	400	150	3500	300	150	2000	300	150
		-2	3500	450	200	3500	300	200	2000	350	175
1/4-20 1/4-28	-2	5000	500	325	5000	300	325	3000	400	325	
METRIC (mm)	M3	-1	13	1334	9.6	13.3	978	7.3	6.7	956	7.3
		-2	13	1334	16.9	13.3	1000	16.9	8.9	1000	9
	M4	-1	13	1334	16.9	13.3	1067	12.4	8.9	1112	15.8
		-2	13	1779	22.6	15.6	1334	16.9	8.9	1178	16.9
	M5	-1	15	1779	16.9	15.6	1334	16.9	8.9	1334	16.9
		-2	15	2001	22.6	16.6	1334	22.6	8.9	1556	19.7
	M6	-2	22	2224	36.7	22.2	1334	36.7	13.3	1779	36.7



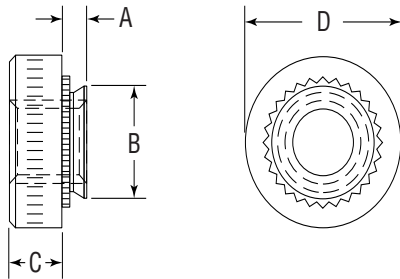


# Self-Clinching Nuts for Stainless Steel

## Series CFSP



CFSP self-clinching nuts provide strong load-bearing threads in stainless sheet metal as thin as .030 inches (.8mm).



Series	Material	Finish
CFSP	Precipitation Hardened Stainless Steel	Passivated ASTM A967

Thread: Internal 2B, ANSI B1.1 (6H, ANSI/ASME B1.13M).  
Use in: Materials with Rockwell Hardness of B-88 or less.

### Dimensions & Specifications

Thread Size	Part Number	A Max.	Min.	+0.003 in. (.08 mm) -0.000 (.00)	B Max.	C ±.01 in. (±.25mm)	D ±.01 in. (±.25mm)	Min.	
INCH (in.)	#4-40	CFSP440-0	.030	.030-.039	.166	.165	.07	.25	.19
		CFSP440-1	.038	.040					
		CFSP440-2	.054	.056					
	#6-32	CFSP632-0	.030	.030-.039	.1875	.187	.07	.28	.22
		CFSP632-1	.038	.040					
		CFSP632-2	.054	.056					
	#8-32	CFSP832-0	.030	.030-.039	.213	.212	.09	.31	.27
		CFSP832-1	.038	.040					
		CFSP832-2	.054	.056					
	#10-32	CFSP1032-0	.030	.030-.039	.250	.249	.09	.34	.28
		CFSP1032-1	.038	.040					
		CFSP1032-2	.054	.056					
1/4-20	CFSP420-1	.054	.056	.344	.343	.17	.44	.34	
	CFSP420-2	.087	.090						
METRIC (mm)	M3 x 0.5	CFSPM3-0	.77	.8-1	4.22	4.2	1.5	6.35	4.8
		CFSPM3-1	.97	1.0					
		CFSPM3-2	1.38	1.4					
	M4 x 0.7	CFSPM4-0	.77	.8-1	5.41	5.38	2	7.87	6.9
		CFSPM4-1	.97	1.0					
		CFSPM4-2	1.38	1.4					
	M5 x 0.8	CFSPM5-0	.77	.8-1	6.35	6.33	2	8.75	7.1
		CFSPM5-1	.97	1.0					
		CFSPM5-2	1.38	1.4					
	M6 x 1.0	CFSPM6-1	1.38	1.4	8.75	8.73	4.08	11.1	8.6

Continued on next page.